

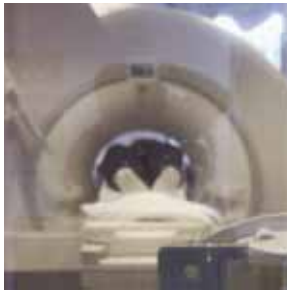
Cedara PET/CT Workstation™



2005-00653 V.2.0

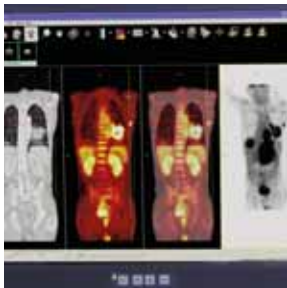


Advanced Imaging through Dual Modalities



PET and PET/CT are popular topics of discussion in both nuclear medicine and radiology forums. From imaging previously unknown neurological processes to its impact on oncology, these modalities are causing a stir amongst medical imaging professionals.

As a combined modality PET/CT provides powerful functionality beyond the scope of either PET or CT images alone, by allowing healthcare specialists to view physiological activity in conjunction with anatomical location.



As a relatively new modality, many radiology systems and PACS solutions however, are struggling to adapt to this technology. Sadly, many remain totally incompatible, forcing reading physicians to practice on the PET/CT console itself.

Addressing many of the issues surrounding the synthesis of data from PET/CT, Cedara is pleased to provide a software solution which allows PACS integration, while improving workflow, connectivity and efficiencies surrounding this modality.

Cedara's PET/CT Workstation breaks away from historic methods of showing PET/CT images by providing layouts split across dual monitors in *panoramic* mode.

Integrated Workflow for PET/CT Reporting

While some vendors try to make PET/CT seem complicated and overly technical, Cedara Software's **PET/CT Workstation™** has been designed to easily accommodate the standard methods that Radiologists use to read CT datasets.

Following the norm found in PACS, Cedara's PET/CT Workstation breaks away from historic methods of showing PET/CT images by providing layouts split across dual monitors in *panoramic* mode. For efficient study comparison, this method of review allows simultaneous comparison of CT images, PET Corrected, PET Uncorrected, PET/CT Fused Images and MIP among others. Rigid Registration between images allows simultaneous navigation through all datasets.

Cedara PET/CT Workstation™



Fast and Efficient Workflow

Cedara's PET/CT Workstation employs a variety of features designed to streamline the reporting of PET/CT studies:

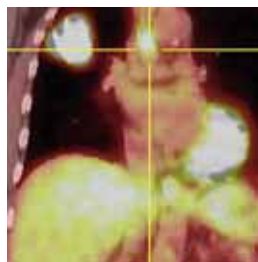
- Progressive Reformatting to significantly improve time-to-first-image, allowing physicians to begin reporting while studies continue to load
- Support for dual monitors with special *panoramic* layouts
- 3D Maximum Intensity Projection (MIP), Minimum Intensity Projection (mIP) and 3D as hot-spot scout
- Tools for reading from axial, sagittal and coronal slices
- Quickly compare current and prior images simultaneously

Image Registration

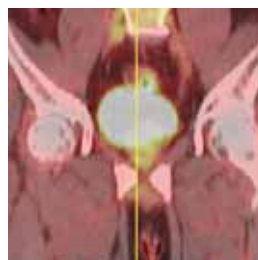
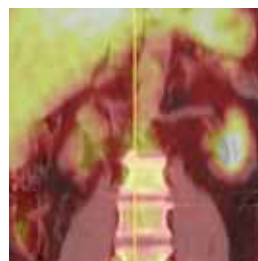
Cedara's PET/CT Workstation provides two methods for linking images together (rigid transformation):

- Manual Alignment (user interactively defines orientation, scaling and translation in each study for registration)
- Landmark Alignment (user selects matching anatomical references in each study for registration)

Through Image Registration, Cedara's PET/CT Workstation provides cross-correlation (or triangulation) between all images. Whether in 2D, 3D or MPR views, clicking on a region automatically snaps all views to the same location.



Cedara's PET/CT Workstation displays physiological activity with anatomical location through fused PET and CT images



Comprehensive Tools to Report PET/CT

For practitioners familiar with PACS systems, Cedara PET/CT Workstation contains immediately recognizable controls. Tools include:

- Measurements -> line, angle, rectangle, ellipse, polyline, polygon (including SUV calculation)
- SUV modes -> Body weight, Body surface area & Lean body mass
- Standard tools for zoom, pan, magnify, 3D rotation, adjust fusion control, window/level presets, reset
- Configurable colourmaps for PET & MIP display

Integration

PET/CT can be easily integrated into PACS environments through DICOM capabilities including:

- Output via DICOM Secondary Capture
- Launch via DICOM Part 10 files
- Hardcopy via DICOM Print
- Mark as Read

Cedara's PET/CT Workstation has been designed to operate with all PET or PET/CT manufacturer's equipment, and allows multimodality review from one workstation.

For OEM companies, Cedara PET/CT Workstation is available as a standalone workstation or can be tightly integrated into existing PACS solutions using Cedara's unique C4 integration platform.